



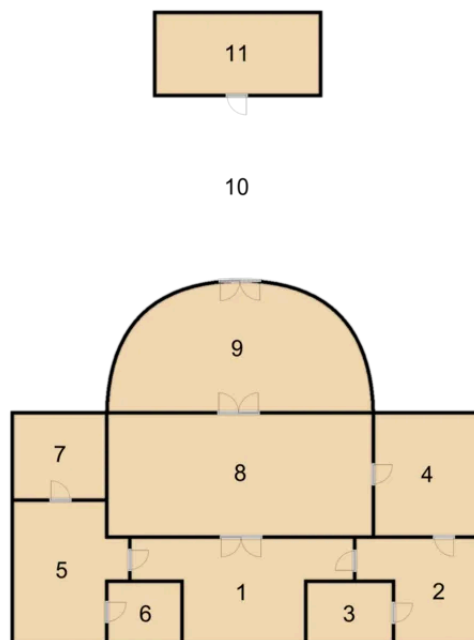
Count Enigma's Villa

As you walk up to the grand villa and enter through the large wooden doors, you think back to the newspaper obituary you read the day before.

Count Enigma, 1942-2026

The Count leaves behind no family, but he does leave a challenge. Solve his riddles, and you will inherit all his belongings. Prove your prowess at Count Enigma's Villa.

Below it was a map of the house:



The grand hallway features a glass chandelier, stylish wooden furniture, and an out-of-place table in the middle. On it is a letter.